



---

RIO HONDO COLLEGE

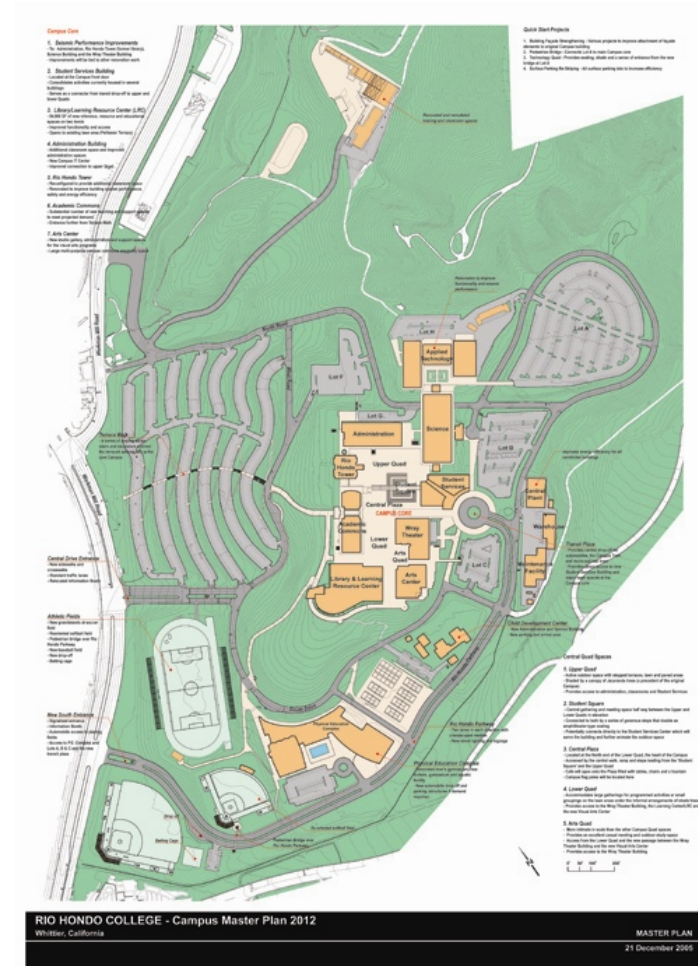
*Master Plan Update 2010*

# *Introduction*



# REASONS FOR UPDATE

- *Changing Circumstances*
- *Rio Hondo Parkway*



## GUIDING PRINCIPLES

---

*The Campus Plan shall be developed and maintained through a collaborative process.*

All segments of the college community should be allowed an opportunity for meaningful input in the development of the Campus Master Plan.

The Campus Master Plan shall be reviewed annually by the Planning & Fiscal Council.

### *Design of Instructional Buildings*

Related instructional programs should be clustered together.

Spatial isolation of programs should be minimized except where appropriate, e.g. Public Service.

The impact of construction on the instructional program shall be minimized.

All technology systems should be integrated and efficient.

Instructional buildings should be designed with maximum flexibility.

*The campus shall be accessible, convenient and safe.*

The campus should be accessible to all students and employees.

There should be efficient and safe ways to navigate the campus.

Parking should be sufficient and convenient to major sites.

There should be convenient and safe drop-off locations.



# GUIDING PRINCIPLES

---

## *Aesthetics and Social Considerations*

Open spaces shall be preserved.

There should be a unified campus design.

The campus should have a recognizable entrance.

The natural environment, including the view, shall be preserved.

The campus should have attractive gathering places, both indoors and outdoors.

## *Student Services*

Student services should be combined into a one-stop facility and be accessible to all students.

Student services should be easily accessible from off-campus with convenient parking.

Off-campus center(s) should be convenient for local residents and match the needs of local residents.

Buildings and infrastructure should be environmentally sound.



*Let's Mitsakos while at other firms*



# *Critical Issues*



## CRITICAL ISSUES

---

- *Access & Orientation*
- *Parking*
- *Accommodating Growth*
- *Serving the Community*



# *Access & Orientation*





## ACCESS & ORIENTATION

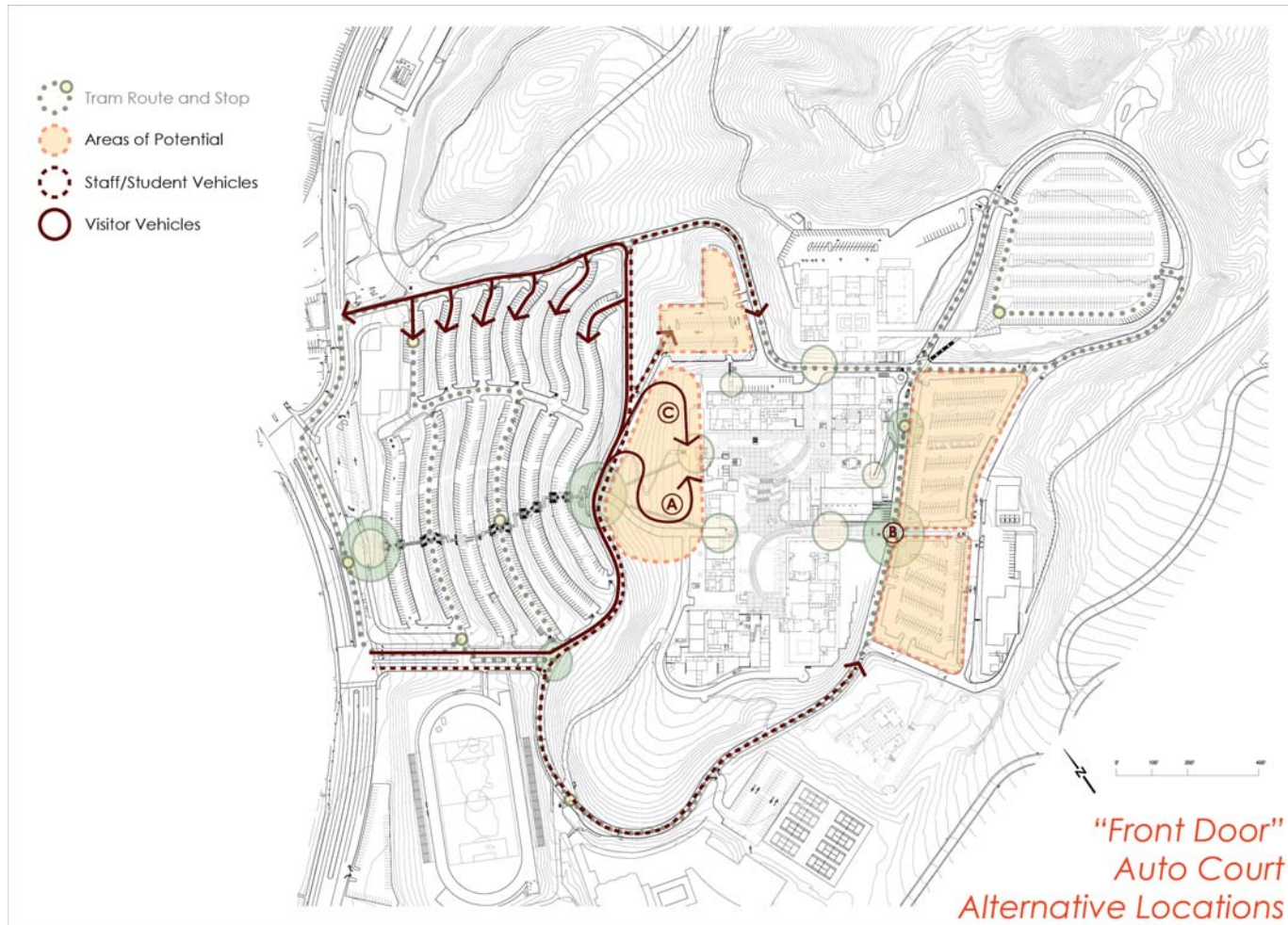
---

- *West Campus Entrance Plaza*
- *Campus Front Door*
- *Information Kiosk*
- *Auto Drop-Off*



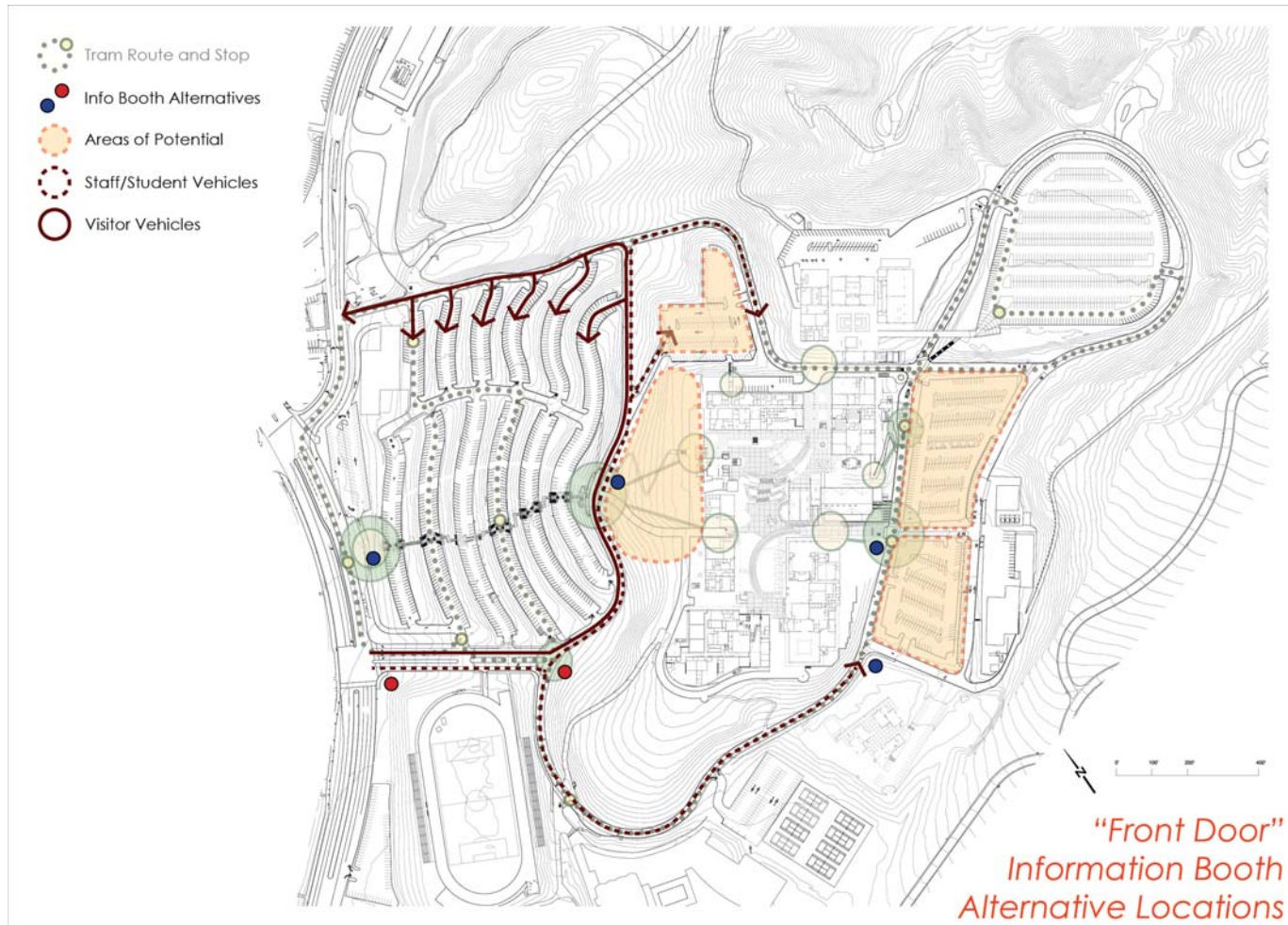
# ACCESS & ORIENTATION

## Front Door - Auto Court



# ACCESS & ORIENTATION

## Front Door – Information Booth



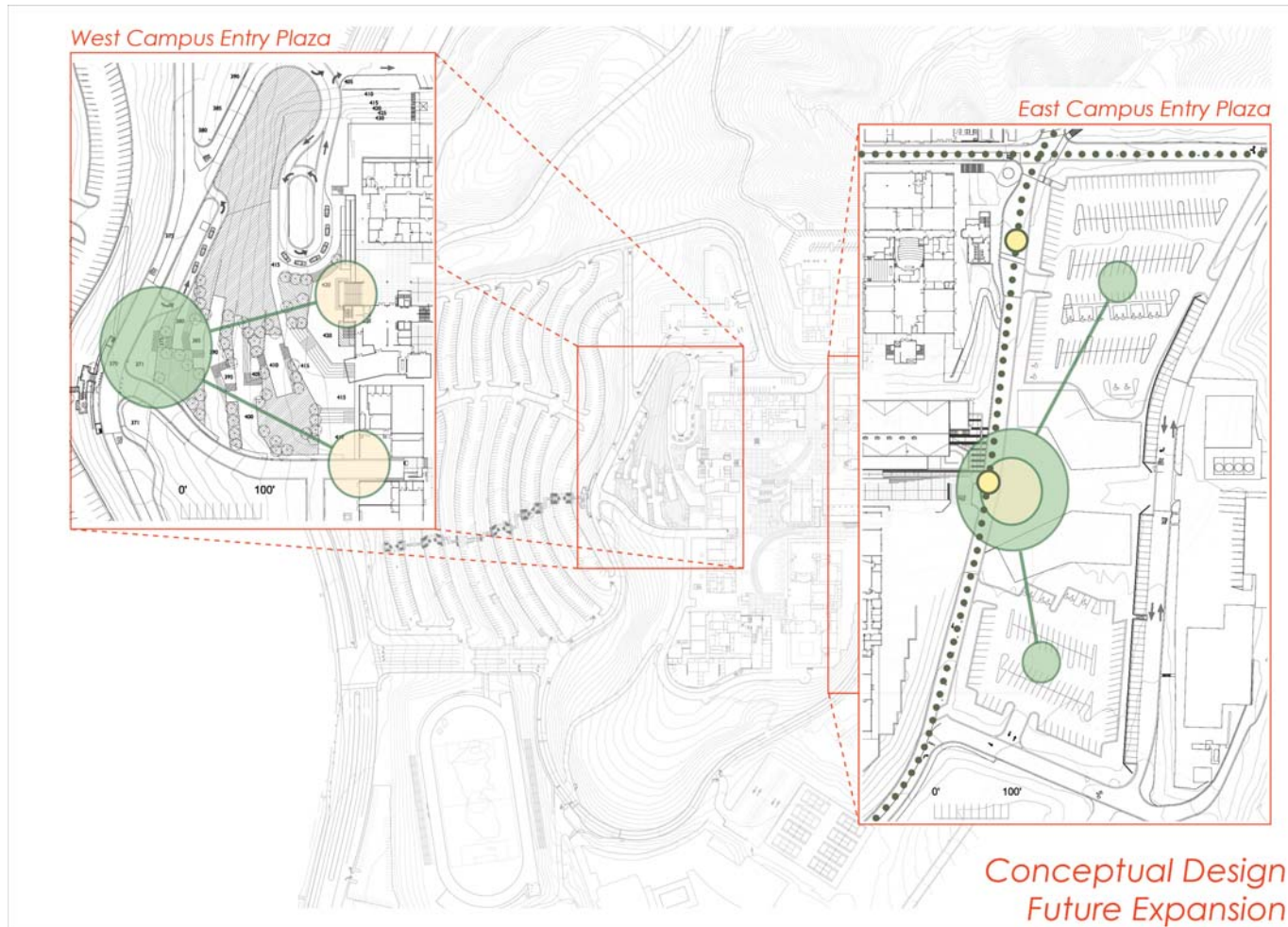
# ACCESS & ORIENTATION

## *Upper Terrace Walk*



# ACCESS & ORIENTATION

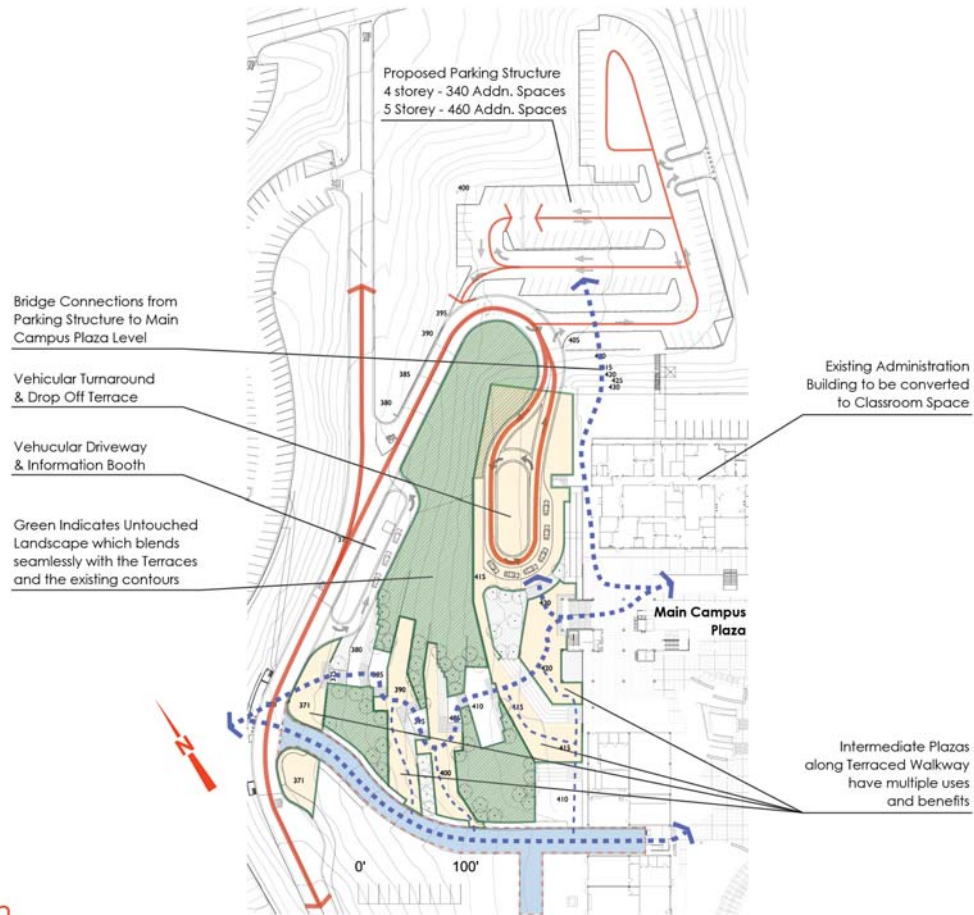
## *West Campus Entry & East Campus Plaza*



# ACCESS & ORIENTATION

## West Campus Entry Plaza

-  Fire Access/Loading Only
-  Secondary Pedestrian
-  Primary Pedestrian
-  Secondary Automobile
-  Primary Automobile



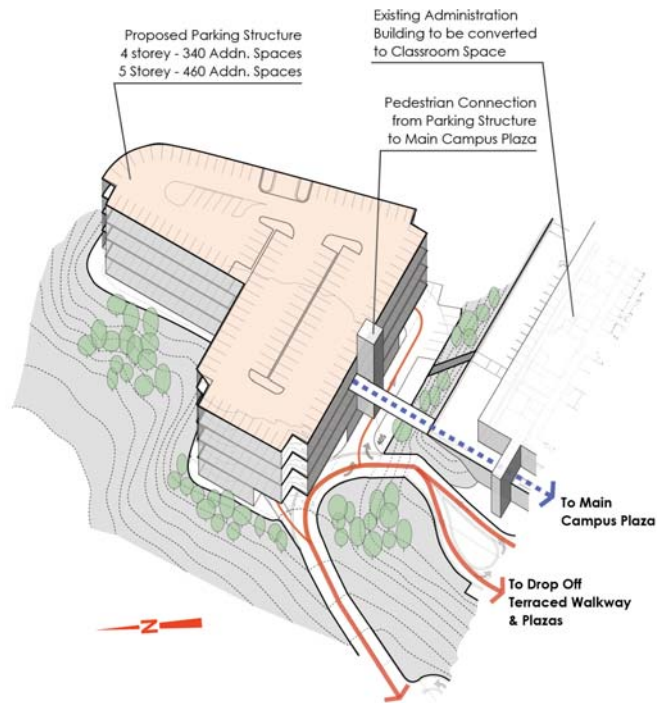
Conceptual Design  
West Campus Plaza



# ACCESS & ORIENTATION

## Lot F Parking Structure

-  Pedestrian Traffic
-  Secondary Automobile
-  Primary Automobile



Conceptual Design  
West Campus Plaza



# ACCESS & ORIENTATION

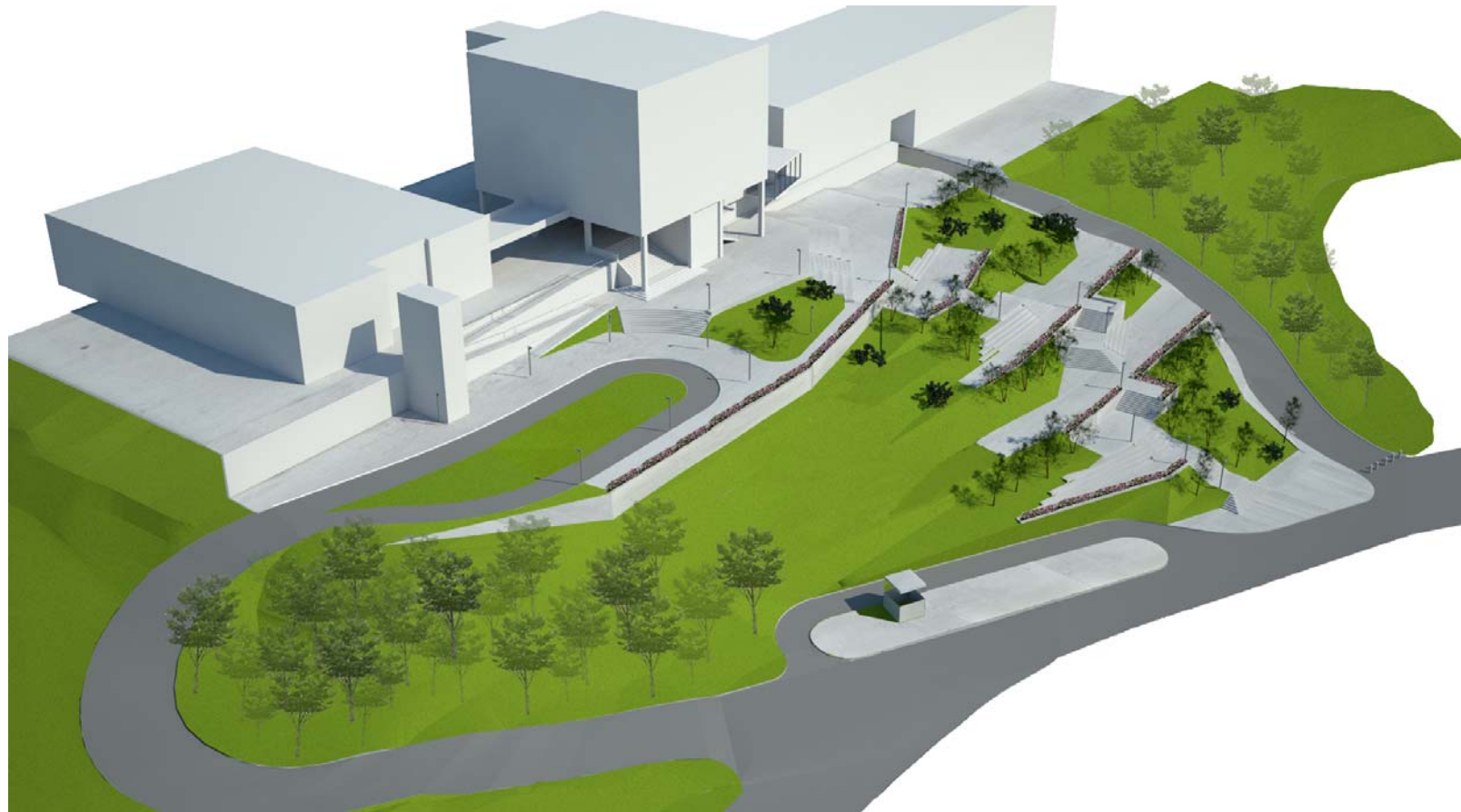
## *West Campus Entry Plaza & Upper Terrace Walk*





# ACCESS & ORIENTATION

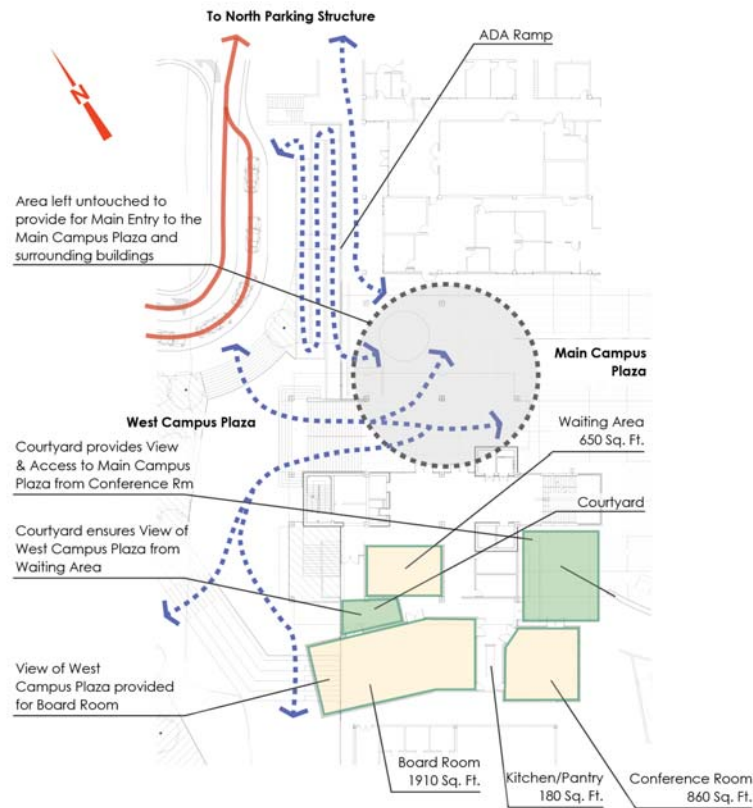
## *West Campus Entry Plaza & Upper Terrace Walk*



# ACCESS & ORIENTATION

## *West Campus Entry Plaza & New Board Room*

-  Pedestrian Traffic
-  Vehicular Traffic



*Conceptual Design  
Board Room/Administration*



# ACCESS & ORIENTATION

*View From Board Room Looking West*

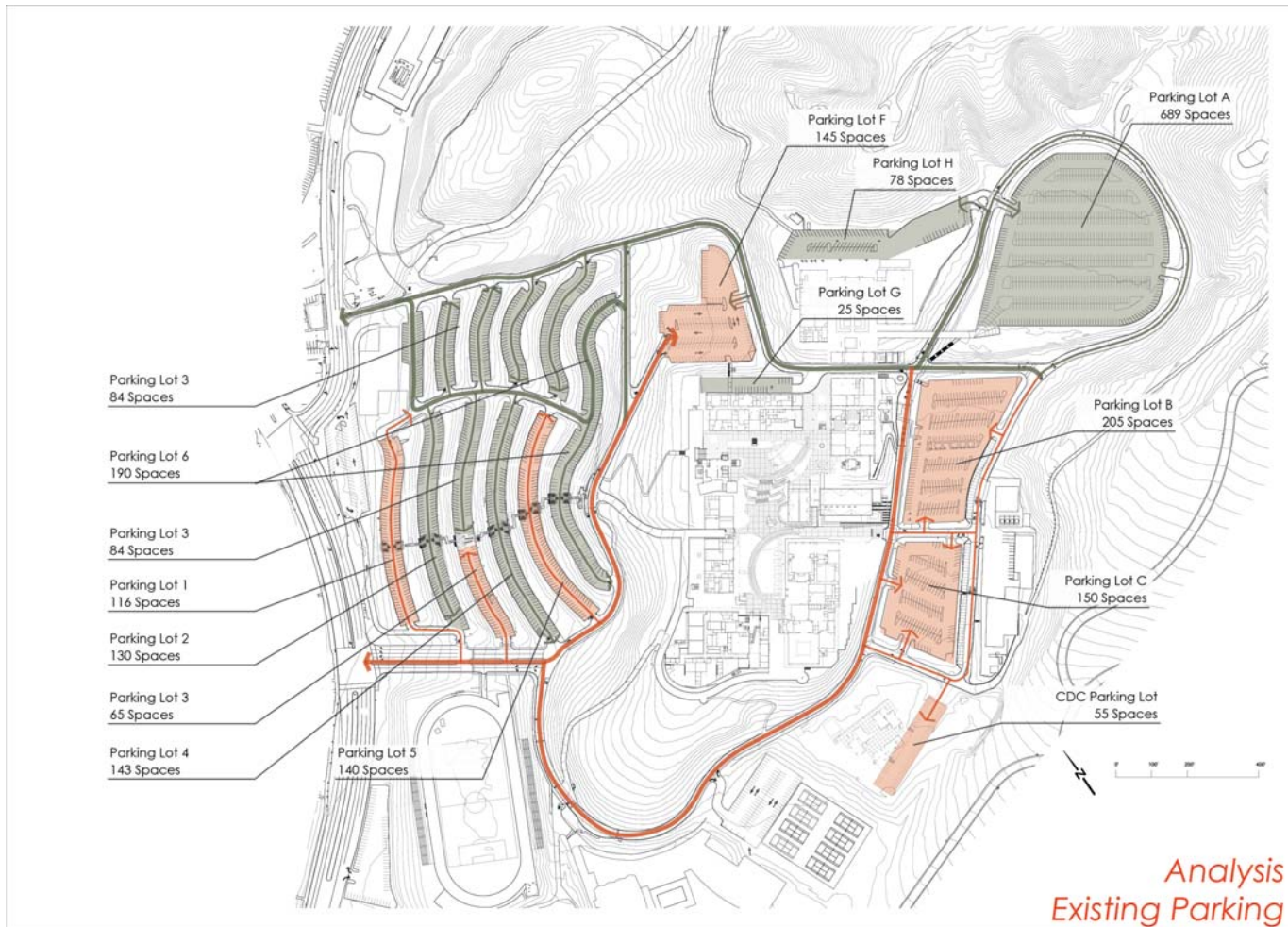


# *Parking*



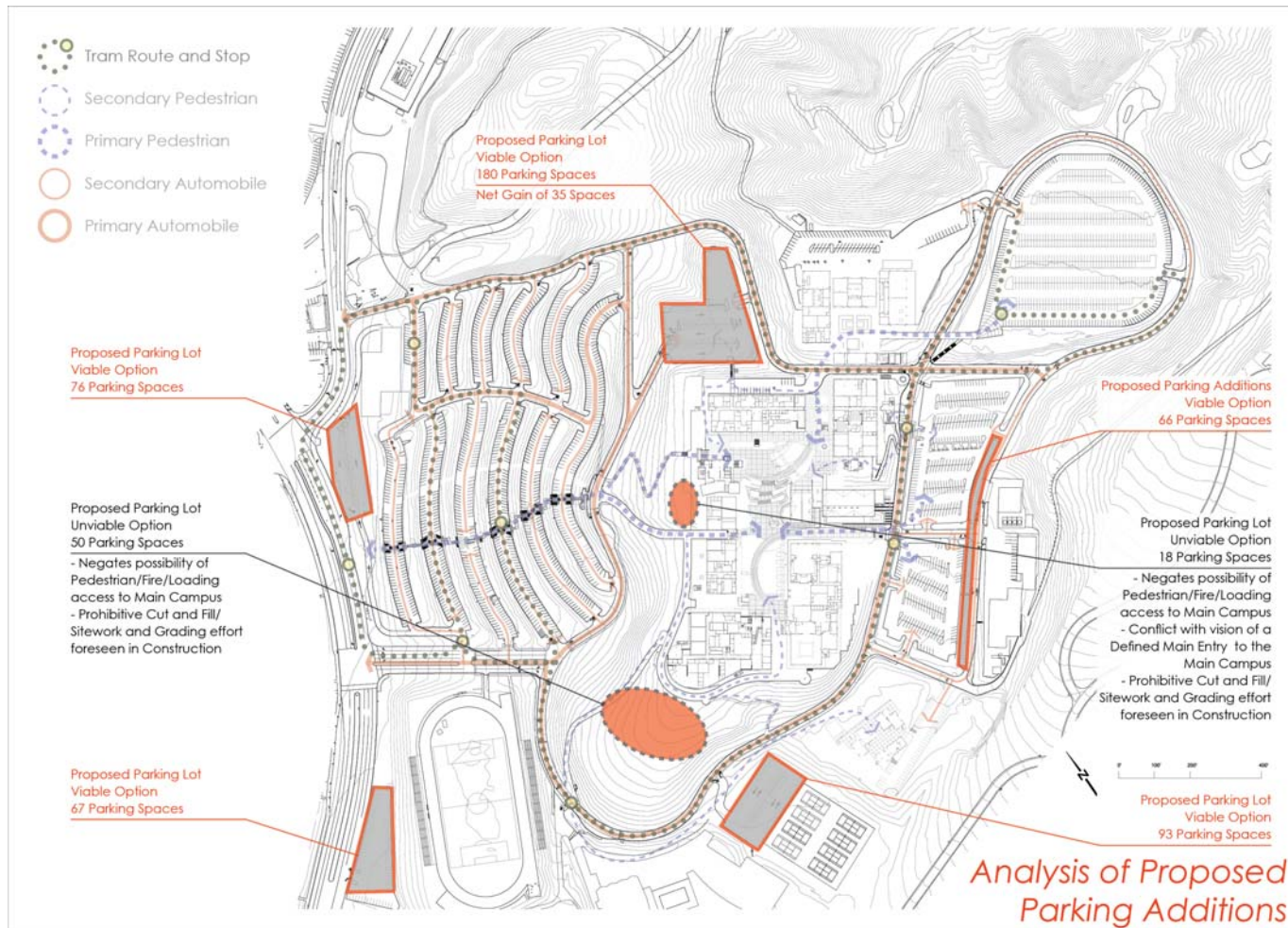
# PARKING

## *Analysis of Existing Parking*



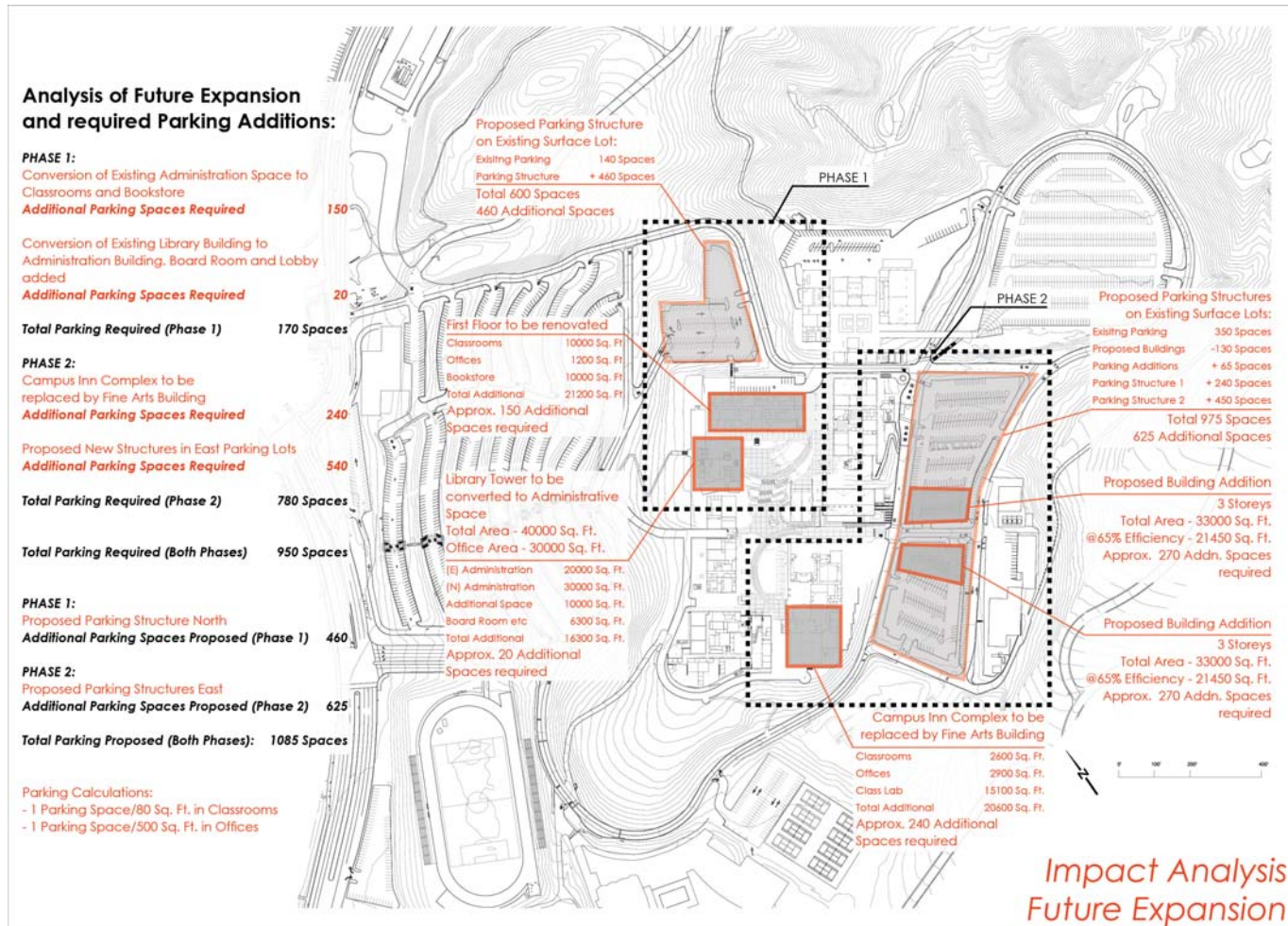
# PARKING

## *Analysis of Proposed Parking Additions*



# PARKING

## Future Expansion & Parking Requirements



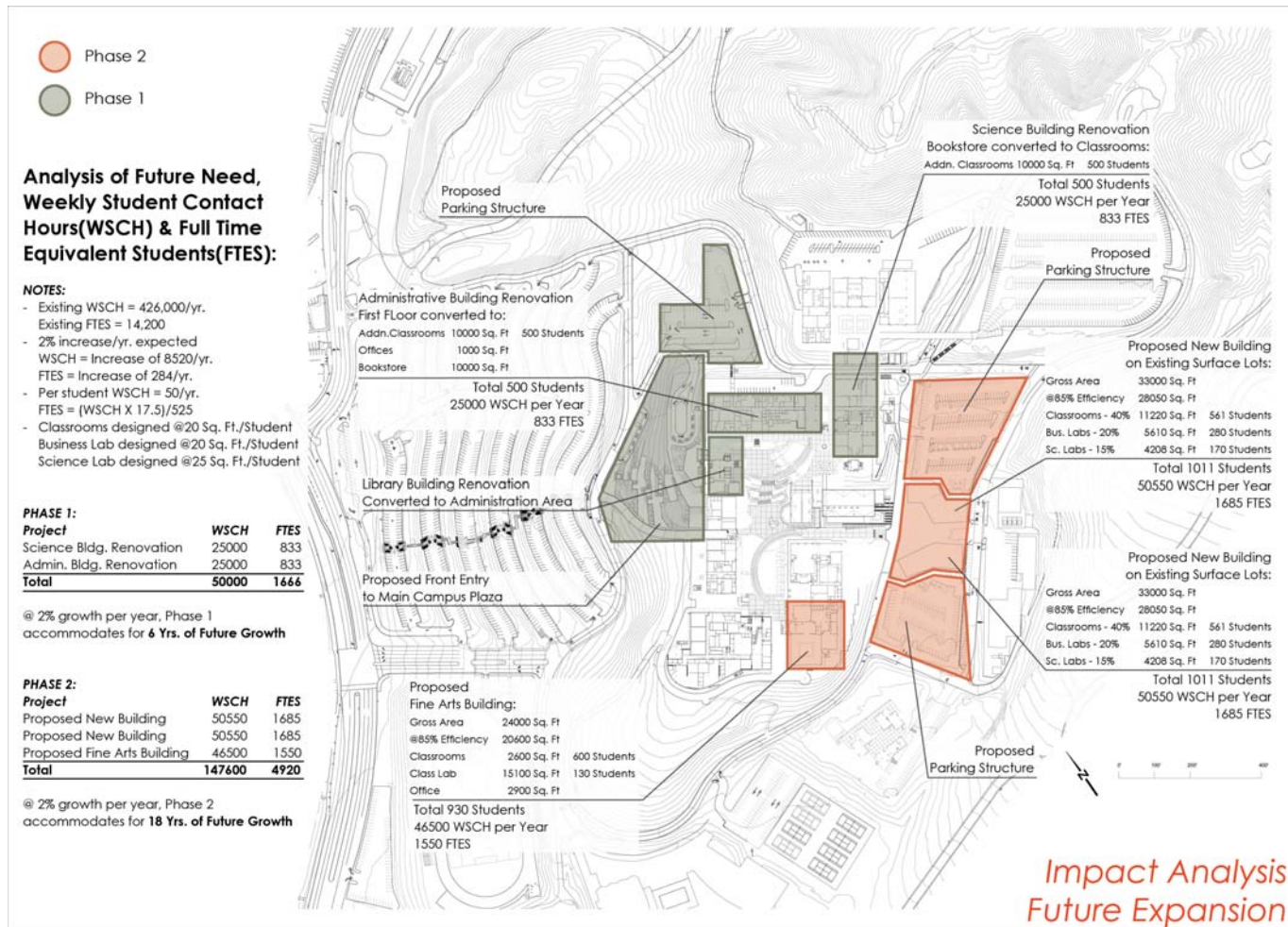
# *Accommodating Growth*





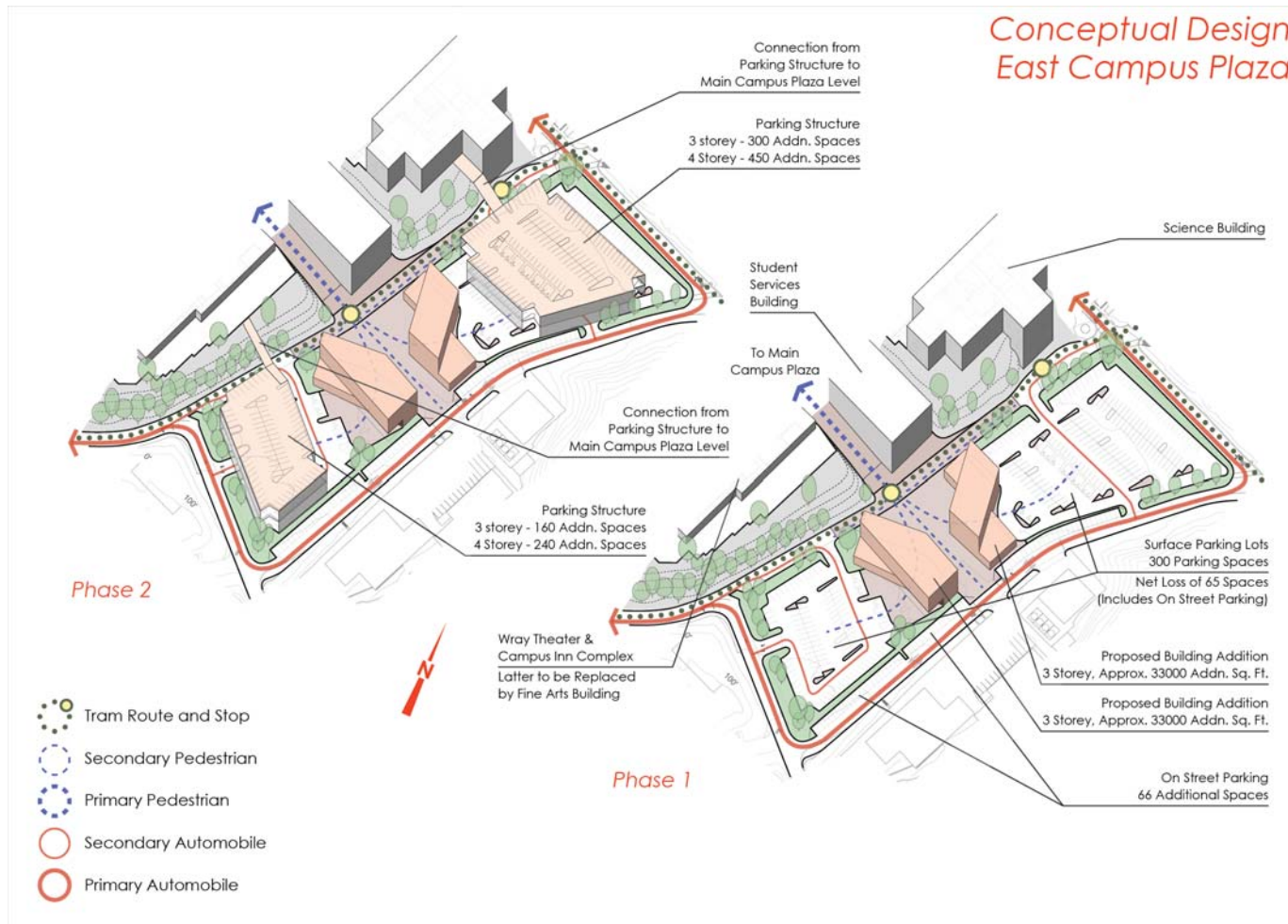
# ACCOMMODATING GROWTH

## Campus Growth Potential



# ACCOMMODATING GROWTH

## East Campus Plaza



# *Serving the Community*



# SERVING THE COMMUNITY

## *Off-Site Centers*

